



EXTREMESUPERTRUCK.COM



EXTREME SUPER TRUCK

2013 Ford F-650 Truck Features & Specifications



EXTREMESUPERTRUCK.COM

EXTREME SUPER TRUCKS



F-650 XLT CREW CAB 4X2
4 DOOR

Starting at **\$89,500**



F-650 EXTREME
4X2 4 DOOR

Starting at **\$111,250**



F-650 EXTREME
4X4 4 DOOR

Starting at **\$146,850**



F-650 EXTREME
6 DOOR

Starting at **\$145,250**

*All Trucks Come Standard with Allison Transmission and Cummins Diesel Engine



888-650-8782



EXTREME SUPER TRUCK

Ford F-650 Power Options



The standard engine for 2012 is the venerable ISB 6.7L. It features the latest Cummins technology, including full-authority electronic controls, a high-pressure common-rail fuel-injection system, 24-valve design, the patented VGT turbocharger, a particulate filter and more.

Excellent power-to-weight ratios help it deliver outstanding fuel economy as it delivers every load. The 6.7L comes in your choice of 10 horsepower and torque ratings.

- 6 Cylinders - 6.7 liter
- 325 HP
- 800 Ft Lbs of Torque



EXTREMESUPERTRUCK.COM



EXTREME SUPER TRUCK

Allison 3000 Series Pushbutton
6 Speed Double Overdrive



Easy to use push button control
panel with monitor.



Allison 3000 Series pushbutton automatic transmission is an installed option in all Ford F-650 4x2 and 4x4 models. Allison® automatics feature load-based shift (LBS) scheduling and provide the benefits of synthetic transmission fluid – including increased resistance to oxidation and reduced cost because synthetic fluid doesn't need to be replaced as often as petroleum-based fluid.

Allison 3000 Series Transmission is a
trademark of Allison Transmission, Inc.



EXTREMESUPERTRUCK.COM

EXTREME SUPER TRUCK

Ford F-650 Extreme Standard Options List



- Extreme Trim package, Capt. chairs w/leather and all power options
- Full Dash Cluster w/tachometer
- Overhead gauge pod w 4x4 switch
- 4.88/5.29 Dana Axle ratio
- Air Brakes with ABS
- Air Suspension w/ dump valve
- Kelderman 4 Link Front air with rear bags
- Rancho Shock package or Nitrogen Gas with Ex/ reservoir
- Dual 100+ gallon stainless tanks (DOT certified)
- Locking fuel caps
- Billet foot rest with optional electric hiding entry steps
- Triple Train Horn
- Alcoa 22.5 wheels



EXTREME SUPER TRUCK

Ford F-650 Extreme Standard Options List



- Air Dryer (Bendix)
- 12 volt, Motorcraft 2 900 CCA Batteries
- Engine block heater
- Allison 3000 6 Speed RDS Series
- Chrome bumpers
- Mud Flaps
- Custom Dually Rear Fenders
- Line X bed
- 15,000 lb Class 5 Receiver
- Prodigy Solid State Digital Brake control
- FM/AM clock, w/Bluetooth/CD/DVD Navigation MP3 player
- And much more.....





MSRP \$89,500.00



INCLUDES THE NEW CREW CAB & CHASSIS:

- Full Black Leather Heated Captain's Chairs with 6 Way Power
- Leather Steering Wheel
- Black Carpet, Headliner
- Full Power Sail Mirrors
- ABS and Traction Control
- AM/FM CD,DVD,MP3 Player With Bluetooth Connectivity
- Sirius Radio and Navigation
- Cruise Control
- Power Windows and Locks
- Brakes in Either Hydraulic Or Air

DRIVELINE AND POWER OPTIONS:

- 325 Hp Cummins Diesel With 800 Foot Lbs Of Torque
- Allison Rds 3000 Series 6 Speed Double Overdrive
- Auto Leveling Rear Air Ride with Dump Valve
- Super Trucks Pickup Conversion Includes:
 - Linex Bed
 - Brake Controller
 - Class 5 Tow Package
 - Polished Aluminum Wheels
 - Window Tint
 - Dual 900 Amp Batteries with 185 Amp Alternator
 - Dual 50 Gallon Black Steel Fuel Tanks
 - See Option for F-650 Hauler Bed



2013 FORD F-650 XLT PICKUP

SuperTruck



MSRP \$111,250.00

**INCLUDES THE XLT CREW CAB & CHASSIS
INCLUDES THE XLT DRIVELINE & POWER OPTIONS**



EXTREME OPTIONS:

- Includes everything in XLT package plus:
- Dual 100 gallon stainless fuel tanks
- Kelderman 4 link Front air ride
- Exclusive Super Duty F-650 Hood and headlights
- Exclusive Super Truck Rear Fenders
- Upgraded Speakers
- Upgraded Shocks
- Alarm System
- LED light package
- Chrome Triple Train Horn



2013 FORD F-650 EXTREME 4X2 PICKUP



MSRP \$146,850.00

INCLUDES THE XLT CREW CAB & CHASSIS
INCLUDES THE XLT DRIVELINE & POWER OPTIONS
INCLUDES ALL EXTREME PACKAGE OPTIONS

4X4 OPTIONS:

- Fabco 4x4 axle installed with Ford back warranty
- Power Electric Steps
- Heavy duty Shock Upgrade with Gas reservoirs
- Custom 20,000lb hitch
- Stainless Steel Rear 4x4 roll pan
- Super Singles



2013 FORD F-650 EXTREME 4X4 PICKUP



\$99,400



INCLUDES:

- Full power sail mirrors
- Sirius radio and navigation
- Cruise control
- Power windows and locks
- 15" integrated steering wheel
- 40-20-40 steel gray cloth interior
- Black carpet
- AM/FM CD, DVD, MP3 player with Bluetooth connectivity

DRIVELINE AND POWER OPTIONS

- 325 HP Cummins 6.7L Diesel
- Allison 3000 Series 6 Speed with Overdrive
- 4 wheel ABS hydraulic brakes
- 185 Amp Leece-Neville 12-volt alternator
- Polished aluminum wheels
- Dual 50 gallon tanks
- 19,500 GVWR

2013 FORD F-650 HAULER



www.ExtremeSupertruck.com
www.facebook.com/ExtremeSupertruck



(706) 733-6271

1020 Franke Industrial Dr. Augusta, GA 30909



F450 to F550 PICKUP CONVERSION

LIGHT & DUTY PICKUP CONVERSION
INTERNATIONAL TERRASTAR * DODGE 4500 TO 5500 * FORD F450 TO 550

BUILT TO SUIT YOUR NEEDS!

CABIN CHASSIS PICKUP UPFIT INCLUDES:

60" F-350 Dually Bed (All Steel) - Paint Bed with Spray Bed Liner - Class 5 Trailer Hitch and Wiring
Front Fenders Painted to Match - Chrome Rear Bumper - Labor and Misc. Hardware

LET US TURN YOUR TRUCK INTO A PICKUP. WE WILL ORDER FOR YOU OR YOU SEND TO US. ONLY: \$10,200



www.ExtremeSupertruck.com
www.facebook.com/ExtremeSupertruck



(706) 733-6271
1020 Franke Industrial Dr. Augusta, GA 30909

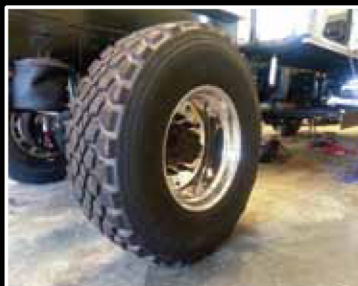
SuperTruck



\$100,165

DRIVELINE AND POWER

- MaxxForce 7 300HP diesel engine with 660lb-ft torque
- Allison 1350 6-speed with overdrive
- Hydraulic brakes with 3-channel ABS
- 185-amp Leece-Neville alternator
- Chrome grille & headlight bezels
- Window tint
- Supertruck aluminum body
- Custom 22.5 aluminum wheels
- 255/70R 22.5 tires
- Full rear air ride
- Auxiliary air
- Rear dump valve



2012 - 2014 INTERNATIONAL 4X4 HAULERS

www.ExtremeSupertruck.com

www.facebook.com/ExtremeSupertruck



(706) 733-6271

1020 Franke Industrial Dr. Augusta, GA 30909



MSRP \$145,250.00

INCLUDES THE XLT CREW CAB & CHASSIS
INCLUDES THE XLT DRIVELINE & POWER OPTIONS
INCLUDES ALL EXTREME PACKAGE OPTIONS



EXTREME 6 DOOR OPTIONS:

- 6 Door options- All Ford Installed parts with Ford Factory Warranty
- 6 Door XLT Conversion (F-350 conversion available also)
- 2 and 4 wheel drive models
- Set of Stainless Steel Dummy Tanks
- Air Ride Cab with 2 Extra Captain chairs
- Rear AC/Heat



2013 FORD F-650 EXTREME 6 DOOR PICKUP

SuperTruck



MSRP \$190,250.00

INCLUDES THE XLT CREW CAB & CHASSIS
INCLUDES THE XLT DRIVELINE & POWER OPTIONS
INCLUDES ALL EXTREME PACKAGE OPTIONS



EXTREME XUV OPTIONS:

- 6 Door Excursion Style Body built with all Ford approved parts with Ford Warranty
- Set of stainless steel dummy tanks
- Cab Air Ride with 2 extra captain chairs
- Offered in 2 or 4 wheel drive models
- Rear AC/Heat

2013 FORD F-650 EXTREME XUV





SUPERTRUCK ALUMINUM HAULER BODY 77" GA

**In Raw/FOB...
\$14,500**

**Complete Install...
\$19,000**

INCLUDES:

- All Stainless Steel struts and shocks
- Full pass-through storage with incorporated garment rack
- Two storage compartments over wheel well
- Two storage compartments in front of wheel well
- Two rear access storage compartments
- Custom built, all aluminum grab handles
- Recessed, backlit license plate
- LED lighting inside and out
- Headache rack
- Low profile locks

**Ford F350 - F650 Cab & Chassis
Dodge 3500 - 5500 Cab & Chassis
Chevy/GMC 3500 Cab & Chassis**



www.ExtremeSupertruck.com
www.facebook.com/ExtremeSupertruck



(706) 733-6271

1020 Franke Industrial Dr. Augusta, GA 30909



EXTREMESUPERTRUCK.COM



1020 FRANKE INDUSTRIAL DRIVE
AUGUSTA, GA 30909
888-650-8782